

THE JCB COMPACT & MEDIUM HAMMERMASTER RANGE



A Product
of Hard Work

| Model | Compact | | | | | | Medium | | | |
|--------------------------------|---------|-------|--------|-------|-------|--------|---------|---------|---------|---------|
| | HM65 | HM100 | HM100Q | HM115 | HM140 | HM140Q | HM165Q* | HM265Q* | HM385Q* | HM495Q* |
| Micro | ● | | | | | | | | | |
| 801 | ● | ● | ● | | | | | | | |
| 8020X | | | | | ● | ● | ● | | | |
| 802 | | | | | | | ● | | | |
| 8025 | | | | | ● | ● | ● | | | |
| 8027ZTS | | | | | ● | ● | ● | | | |
| 803 | | | | | ● | ● | ● | ● | | |
| 8030 | | | | | ● | ● | ● | ● | | |
| 8032ZTS | | | | | ● | ● | ● | ● | | |
| 8035 | | | | | | | ● | ● | | |
| 804 | | | | | | | ● | ● | | |
| 8040 | | | | | | | | ● | | |
| 8045 | | | | | | | | ● | | |
| 8052 | | | | | | | | ● | ● | |
| 8055 | | | | | | | | ● | | |
| 8060 | | | | | | | | | ● | |
| 8065 | | | | | | | | | ● | |
| 8080 | | | | | | | | | ● | ● |
| Skid Steer Loader 160 | | | | | | | ● | ● | | |
| Skid Steer Loader 170 | | | | | | | ● | ● | | |
| Skid Steer Loader 190 | | | | | | | | ● | ● | |
| Skid Steer Loader III10 | | | | | | | | ● | ● | |
| Mini CX | ● | | | | | | | | | |
| 1CX | | | | ● | | | | | | |
| Midi CX | | | | | | | ● | | | |
| 2CX | | | | | | | | ● | | |
| 3CX | | | | | | | | | ● | ● |
| 4CX | | | | | | | | | ● | ● |
| JZ70 | | | | | | | | | ● | ● |

*Universal options available

The perfect partner for your machine

Whichever mini, midi excavator or backhoe loader you're partnering it with, from the Micro to the JZ70, the JCB Hammermaster is engineered for a perfect match to help every machine achieve its full potential.

Increased productivity

Best-in-class power rates mean JCB compact and medium Hammermasters can do more work, faster; while greater impact energy gives you extra output. And if you add high power and high efficiency together, what do you get? Increased productivity with less wear and tear to your machine.

Maximum performance

Each breaker features a hydraulic brake to dampen out internal pressure spikes, protecting the carrier machine. There's also an exact match of tool and piston diameters to ensure full transfer of power, and a mounting-point design that offers perfect geometry on JCB machines.

Versatile range

The Range of JCB compact and medium Hammermasters includes: universal breakers which, with the right hanger bracket, allow you to achieve a fit with non-JCB machines; quiet breakers that are environmentally friendly and safe to operate in urban areas; and a wide choice of breaker tools for maximum flexibility.

Complete package

Designed for ultimate productivity, reliability and versatility, no breaker works harder for longer than a JCB Hammermaster. Plus, most of the products in the range are supplied ready for use and all come with an extensive parts and labour warranty, for total peace of mind.





Compact Hammermasters

From the Micro to the ICX, fitting a JCB compact Hammermaster means you can get a whole lot more out of your compact machine.



Highly efficient

JCB compact Hammermasters are amongst the most efficient hydraulic breakers available. They are perfectly matched to the JCB carrier machines to give you maximum performance and output, and there's a wide range of tools available, so you can adapt your small machine to virtually any application.

Durable design for long life

The HM165, HM100, HM100Q, HM115, HM140 and HM140Q feature JCB-designed, full-length side plates so that the breaker power cell is fully protected against accidental damage.

A grease retention seal to enable grease to be retained in the lower tool bush area ensures longer component life and smooth operation.

Improved performance

All of the products in the range feature perfectly matched piston and tool diameter for maximum energy transfer.

There is a full range of machine hydraulic installation kits to suit JCB machines. Our specially formulated JCB hammer grease ensures long tool and tool bush life.

Complete package

Finally, every product in the compact Hammermaster range is supplied with onemoil point and one chisel as standard, and is delivered ready for use, complete with hoses, adaptors, couplings, grease gun and grease.



FAST FACTS

- High tolerance to a wide range of oil flows and back pressure ensures compatibility with a wider range of JCB machinery
- A hydraulic brake protects the internal hammer components under normal operation and during blank firing
- Optional quiet models enhance operator comfort
- Exact match of tool and piston diameters for maximum energy transfer
- Sealed-for-life accumulator on HM65, HMI100, HMI15 and HMI40 is maintenance-free for minimum downtime



Medium Hammermasters

Our medium range of Hammermasters offers a wide choice of tools to maximise your machine's capability. And because JCB Hammermasters are extremely efficient and perfectly matched to JCB carrier machines, you simply can't get better performance and output.



Optimised geometry ensures perfect breaker stowage.

Easily fitted to all makes

Medium Hammermasters can be supplied with or without a JCB-designed hammer bracket. With the bracket it is quick and easy to connect to your JCB machine; or you can fit the breakers to many competitor machines with a suitable hanger bracket.

High durability

If you're looking for breakers to work hard in tough conditions or cope with the demands of the hire market, these are ideal: a robust and durable rigid housing system provides excellent protection for the breakers; double tool retaining

pins reduce tool and bush wear by diminishing rotation; and a class-leading tool diameter gives higher resistance to failures and improves wear rates on tools and bushes.

Extremely versatile

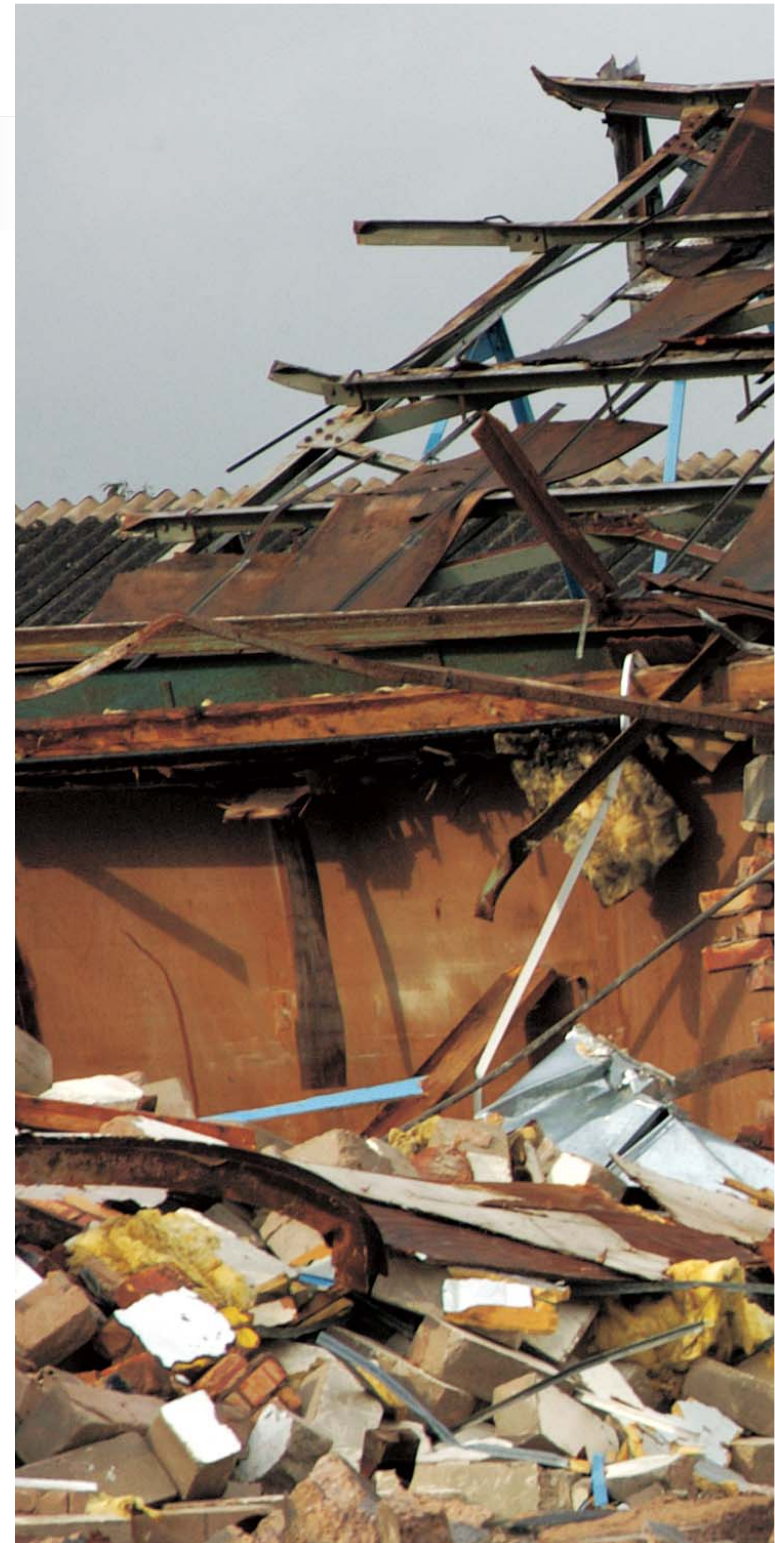
Thanks to the slimline, compact construction, these breakers are ideal for confined applications and offer class-leading power to weight. They're also some of the lightest models available, so they can be fitted to a wide range of machines without compromising safety or performance.

Designed for longer life

Accumulator diaphragm support protects against wear to extend the diaphragm seal life. A robust and durable internal Helicoil bolt system withstands greater flexing without failing. A well-protected charge point reduces the risk of damage during operation.

Complete package

As well as all of these superb benefits, JCB mid-range breakers are silenced as standard for urban and environmentally friendly applications and we supply a full range of hydraulic installation kits to suit JCB machines. They come with perfectly matched piston and tool diameter for maximum energy transfer, onemoil, one chisel, and everything you need to get up and running. We also strongly recommend using our specially formulated JCB hammer grease to ensure long life for tool bushes and tools.



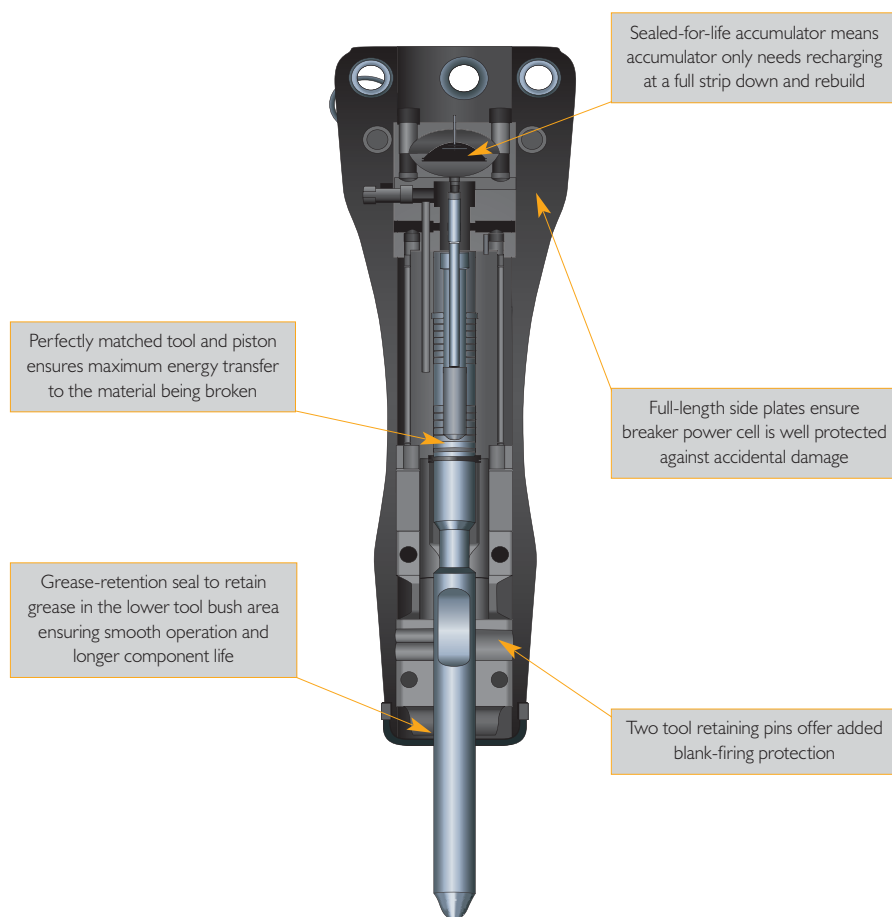
FAST FACTS

- Silenced as standard suits urban and environmentally friendly applications
- Full compatibility with a wide range of non-JCB machines
- Ready-to-fit package – hanger bracket,moil, chisel, tail hoses – means you're quickly up and running
- High tolerance to a wide range of oil flows and back pressures ensures compatibility with a wider range of JCB machinery
- A hydraulic brake protects the internal hammer components under normal operation and during blank firing



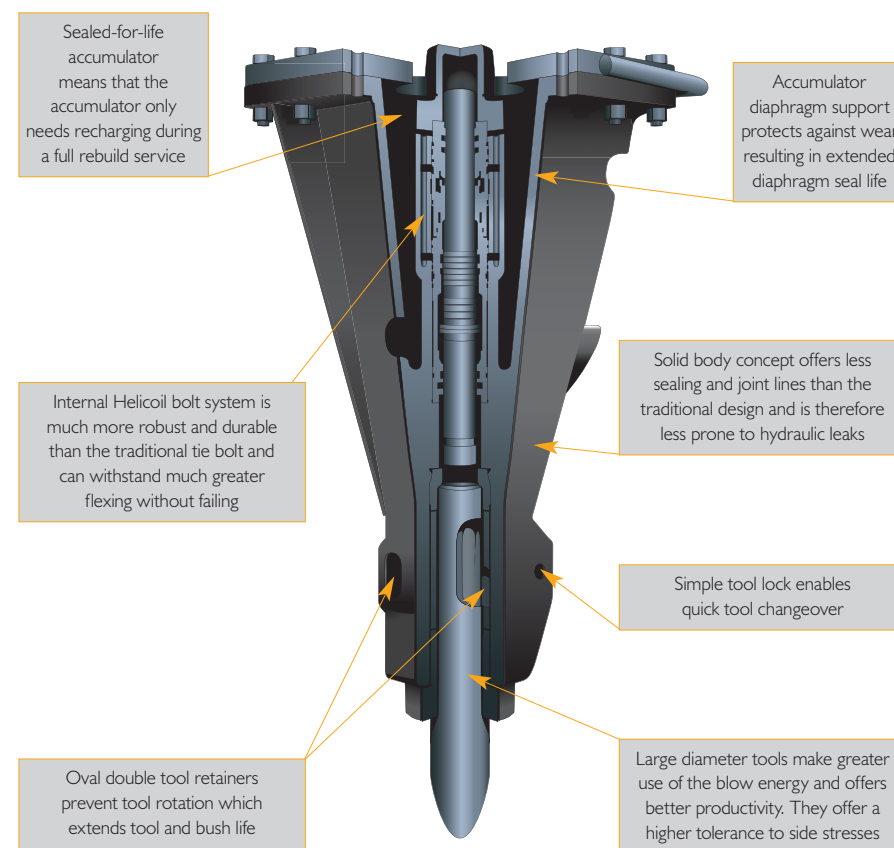
The JCB Hammermaster range

COMPACT HAMMMERMASERS HM65 – HM140



- Hydraulic accumulator gives greater acceleration in the power stroke and reduces pressure peaks in the carrier hydraulic system.

MID-RANGE HAMMMERMASERS HM165 – HM495



- Well-protected charge point reduces the possibility of damage during operation.

Choosing the right tool

Applications

| MATERIAL | USE | SPECIFICATION | TOOL |
|---|---|------------------|--------|
| Asphalt | Road surfaces | Soft structure | Chisel |
| Concrete | Thin floors, walls | Reinforced | Moil |
| | | Non-reinforced | Chisel |
| | Thick floors, walls | Reinforced | Moil |
| | | Non-reinforced | Chisel |
| | Foundations | Reinforced | Moil |
| | | Non-reinforced | Chisel |
| Sedimentary Rock (limestone, sandstone, calcareous sediment) | Trenching, foundation work, primary quarry breaking. | Heavily fissured | Chisel |
| | | Lightly fissured | Moil |
| | | Monolithic | Moil |
| | Breaking oversizes | — | Chisel |



MOIL – Universal. For layered rock and reinforced concrete, where twisting could occur.



CHISEL – Standard tool for penetrative work, eg. mining, foundations, trenching, demolition.

Installation kits

The majority of JCB machines are supplied with breaker pipework already fitted enabling JCB Hammermaster breakers to be easily attached. A full range of comprehensive, genuine JCB installation kits is also available from the JCB dealer network for fitment to both new and old machines without the correct pipework. These custom-designed, structured kits provide the complete solution, including easy-to-use fitting instructions, high quality components and hose routings designed to eliminate abrasive wear.

To ensure continuous, hard-hitting performance, all JCB large Hammermasters are supplied with a choice of moil or chisel tool as standard. Moils and chisels are also available for aftermarket purchase, to provide increased versatility and reduced downtime.



Hammer specification

| JCB Machine | JCB Breaker | | Impact Energy Joules/ft lbs | | Carrier Weight tonnes/lbs | | Blow Rate bpm | | Operating Pressure bar/psi | | Oil Flow Required l/min/US gpm | | Back Pressure bar/psi | Tool Diameter mm/ins | Sound Power Level (dbA) |
|---|---------------------|-------------------------------|--------------------------------|-----------------------|------------------------------|------------|------------------|------|-------------------------------|----------|-----------------------------------|--------|-----------------------------|----------------------------|----------------------------------|
| | Suitable Breaker | Operating Weight kg/lbs | Published Data | AEM Tested Data | Min | Max | Min | Max | Min | Max | Min | Max | Max | | |
| Micro, 80I, Mini CX | HM65 | 75/165 | | | 0.6/1325 | 1.5/3300 | 1300 | 1600 | 90/1305 | 160/2321 | 15/4 | 30/8 | 20/290 | 40/1.6 | 99 |
| 80I | HM100Q | 115/254 | 170/125 | | 1.0/2200 | 1.8/4000 | 900 | 1320 | 145/2103 | 185/2683 | 15/4 | 32/8.5 | 15/218 | 45/1.8 | 121 |
| 80I | HM100 | 103/227 | 170/125 | | 1.0/2200 | 1.8/4000 | 900 | 1320 | 145/2103 | 185/2683 | 15/4 | 32/8.5 | 15/218 | 45/1.8 | 124 |
| 1CX | HM115 | 110/243 | 200/148 | | 1.0/2200 | 3.5/7700 | 850 | 1400 | 90/1305 | 130/1885 | 20/5 | 30/8 | 30/436 | 45/1.8 | 124 |
| 8020X, 8025, 8027ZTS, 803, 8030, 8032ZTS | HM140 | 120/265 | 225/166 | | 1.0/2200 | 3.5/7700 | 850 | 1200 | 120/1740 | 150/2176 | 25/7 | 50/13 | 18/261 | 50/2.0 | 122 |
| 8020X, 8025, 8027ZTS, 803, 8030, 8032ZTS | HM140Q | 136/300 | 225/166 | | 1.0/2200 | 3.5/7700 | 850 | 1200 | 120/1740 | 150/2176 | 25/7 | 50/13 | 18/261 | 50/2.0 | 117 |
| 8020X, 802, 8025, 8027ZTS, 803, 8030, 8032ZTS, 8035, 804, Skid Steer Loader 160/170, Midi CX | HM165Q | 120/265 | 306/226 | 213/157 | 1.9/4190 | 4.5/10000 | 540 | 1080 | 100/1450 | 150/2175 | 20/5 | 65/17 | 20/290 | 50/2 | 124 |
| 2CX, 803, 8032ZTS, 8030, 8035, 804, 8040, 8045, 8052, 8055, Skid Steer Loader 160/170/190/1110 | HM265Q | 200/441 | 516/381 | 377/278 | 2.8/6175 | 6.0/13225 | 480 | 1200 | 100/1450 | 150/2175 | 30/8 | 65/17 | 20/290 | 65/2.6 | 128 |
| 8052, 8060, 8065, 8080, 3CX, 4CX, Skid Steer Loader 190/1110, JZ70 | HM385Q | 312/689 | 859/634 | 611/451 | 4.5/10000 | 9.0/19800 | 480 | 960 | 100/1450 | 150/2175 | 50/13 | 80/21 | 20/290 | 80/3.1 | 125 |
| 8080, 3CX, 4CX, JZ70 | HM495Q | 419/924 | 1058/780 | 762/562 | 6.0/13225 | 12.0/26450 | 390 | 780 | 100/1450 | 150/2175 | 50/13 | 100/26 | 20/290 | 95/3.7 | 129 |

Choosing the right hammer for the application

| APPLICATION | HM65 | HM100/Q | HM115 | HM140/Q | HM165Q | HM265Q | HM385Q | HM495Q |
|----------------------------|------|---------|-------|---------|--------|--------|--------|--------|
| Frozen/hard ground | ● | ● | ● | ● | ● | ● | ● | ● |
| Asphalt removal | ● | ● | ● | ● | ● | ● | ● | ● |
| Pedestals | ○ | ○ | ○ | ○ | ● | ● | ● | ● |
| CONCRETE DEMOLITION | | | | | | | | |
| Roads | ● | ● | ● | ● | ● | ● | ● | ● |
| Buildings | ● | ● | ● | ● | ● | ● | ● | ● |
| Foundations | ● | ● | ● | ● | ● | ● | ● | ● |
| Piers/abutments | ○ | ○ | ○ | ○ | ○ | ○ | ● | ● |
| Bridge decks | ● | ● | ● | ● | ● | ● | ● | ● |
| Reinforced concrete | ○ | ○ | ○ | ○ | ● | ● | ● | ● |
| INDUSTRIAL | | | | | | | | |
| Slag and scrap | ○ | ○ | ○ | ○ | ● | ● | ● | ● |
| Excavation demolition | ○ | ○ | ○ | ○ | ○ | ○ | ○ | ○ |
| Rockbreaking | ○ | ○ | ○ | ○ | ○ | ○ | ○ | ○ |
| Oversize boulders | ○ | ○ | ○ | ○ | ○ | ○ | ○ | ○ |
| Bedrock trenching | ○ | ○ | ○ | ○ | ○ | ○ | ○ | ○ |
| Underwater | ○ | ○ | ○ | ○ | ○ | ○ | ● | ● |

● Hammermaster is suitable for use in this application. ○ Hammermaster is unsuitable for use in this application.

THE BEST BACK-UP IN THE BUSINESS

Always on hand to help

You demand more from your machines than ever before: more efficiency, more reliability, more performance. That's why superb product support has never been so vital.



Together with our extensive dealer network, at JCB we're as innovative and forward-thinking when it comes to customer care as we are in machine development. Our product support and after-sales service have one aim: to give you peace of mind.

The care and quality we offer is exceptional. All servicing is carried out by the best, factory-trained JCB engineers. Using the internet to pass vital information between on-site service personnel and our product support engineers, these professionals always have specialist information at their fingertips, so they can get you up and running again, faster.

Protect your machine and your cashflow

Everyone has individual needs and preferences. So we offer a range of service options all designed to help you cope with the unexpected and minimise costly downtime. Whether it's additional breakdown cover, an all-inclusive scheduled service programme, or servicing, we've got the best service option for you.



Finance packages, tailored to your needs

With ever-growing pressures on cashflows, the finance options available through JCB can provide a vital lifeline. Backed by JCB Finance, who can provide tax-efficient and cost-effective finance solutions, designed and tailored specifically to your needs.

Trust the genuine article

JCB parts are renowned worldwide for performance, reliability and safety. With replacement parts, we supply only the genuine

article, helping to safeguard the impressive residual values that you can expect in years to come.

As well as large stocks of parts engineered specifically for your machine, your JCB dealer also holds an extensive range of JCB: Filters, Lubricants, Grease, Wearparts, Tyres, Rubber Tracks and Service Exchange Components all manufactured to the same exacting standards. Your requirements can usually be supplied immediately by our dealers, but where this is not possible they can be ordered through the direct computer link between your dealer and JCB Service and processed through our impressive automated World Parts Centre warehouse. Despatch is normally the same day either to you or the dealer.

Whether we're providing you with support, parts or finance, we aim for 100% satisfaction. It's all part of our promise to put you, the customer, first.



JCB Sales Limited, Rokester, Staffordshire ST14 5JP Tel: 01889 590312. Fax: 01889 590588. Web: <http://www.jcb.com>

©2008 JCB Sales. All rights reserved. No part of this publication may be reproduced, stored in a retrieval system, or transmitted in any form or by any other means, electronic, mechanical, photocopying or otherwise, without prior permission from JCB Service. JCB reserves the right to change specifications without notice. Illustrations & specifications shown may include optional equipment and accessories. The JCB logo is a registered trademark of J.C. Bamford Excavators Ltd. Printed in the UK on paper made from sustainable forests. The pulp used in the manufacture of this paper is made from renewable timber produced on a fully sustainable basis, and is bleached without the use of chlorine gas (ECF - Elemental Chlorine Free). This paper is suitable for recycling.

9814/0207 9/08 Issue 2



**A Product
of Hard Work**